



## easy Dryer

Simple, reliable and cost effective  
controller for compressed air  
dryers

**Connected** Efficiency

# Introduction to compressed air applications

All manufacturing activities require compressed air to support production processes. From the automotive industry to plastics, timber and chemical industries. Compressed air is used to operate machine tools, actuators and crimpers, or simply to clean the products.

The “easy Dryer” series is the economical solution that meets the needs for reliability and compliance with the main international regulations.

Major compressed air systems include the compressor, treatment equipment and accessories, and the distribution system.

The compressor is the mechanical device that takes in ambient air and increases its pressure.  
The treatment equipment removes

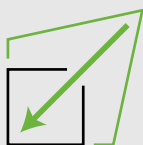
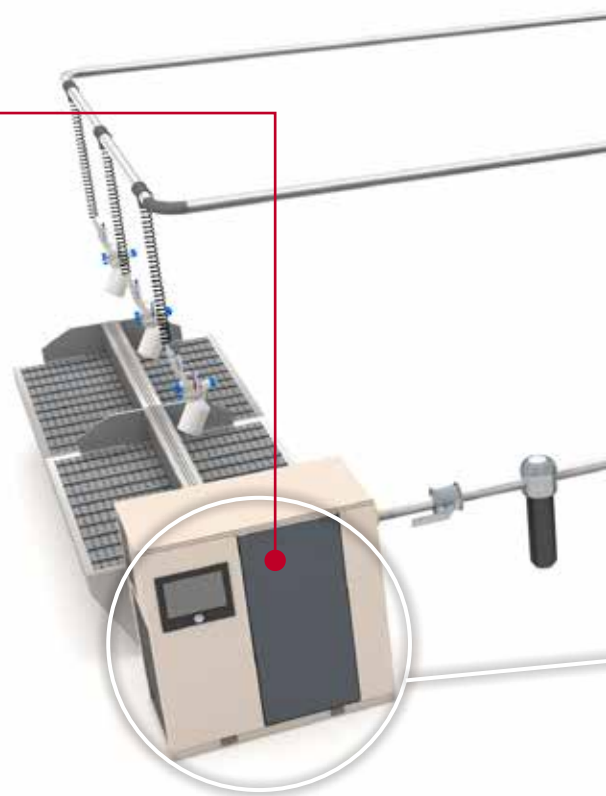


## Certifications



## Compliance

Compliant with flammable refrigerants  
(e.g. R290 propane, R600a isobutane)



## Compact

Ideal when the space available for housing the controller is limited: the depth occupied is just 58 mm while still featuring a 2Hp relay output for the control of refrigeration compressors without requiring additional intermediate relays.



## Front panel IP65

The high index of frontal protection means “easy Dryer” can also be installed in more humid and aggressive environments.



## Supply Voltages

High voltage power supply (230Vac, 115Vac, 50/60 Hz) or low voltage power supply 12Vac/Vdc are all available for the preferred option.

contaminants and water from the compressed air, and accessories keep the system operating properly.

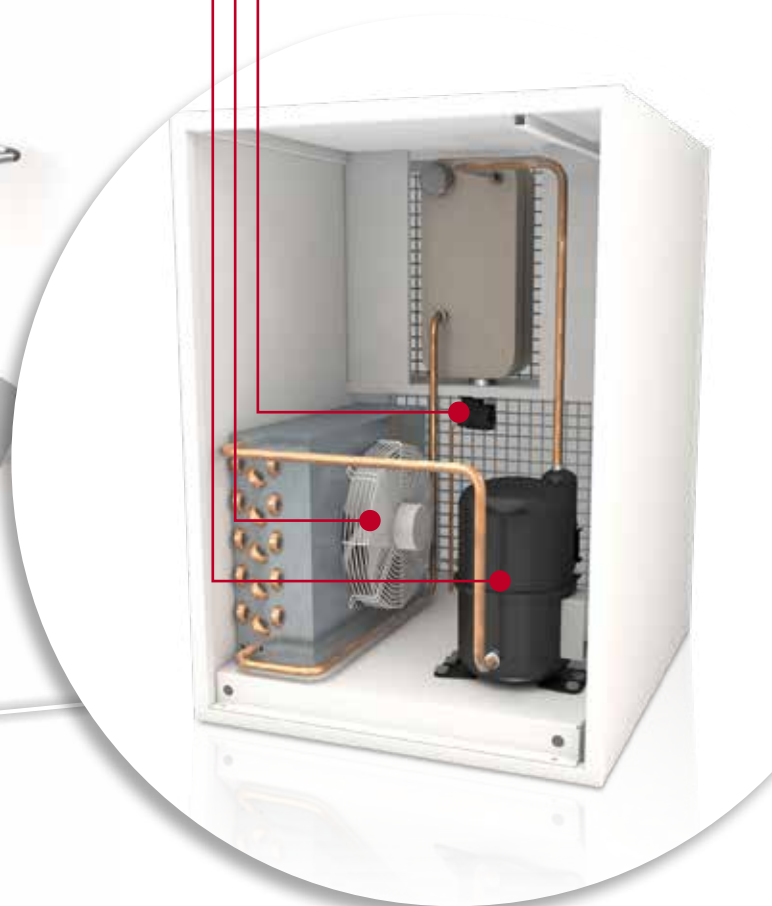
Humidity along with impurities must be removed from compressed air otherwise it condenses and over time it may cause serious damage to the distribution network, and the machineries which employ the compressed air.

The presence of condensation and impurities might also impair the quality of the final product when compressed air is directly utilized as auxiliary to industrial processes.

Compressed air Dryers are then necessary for a reliable and smooth operation of any plant requiring compressed air.

### CAREL proposal

- Management of ON/OFF compressor via NTC input probe;
- Management of condenser fan via NTC input probe;
- Management of condensation drain valve based on intervals;
- ECO mode whenever consitions enable energy saving;
- Hours counter for maintenance purposes



#### Simple

All basic functions for the management of simple refrigerated air dryer are present.



#### Cost effective

Compressor, fan and condensation drain valve managed separately in the 3 relay option. Simplified management with 2 relay for a lower price solution



#### Reliable

The typical current absorption from the condensation drain valve is 100mA. "easy Dryer" provides for a 8A relay which rating is much greater than what necessary, hence ensuring prolonged lifetime of the controller.



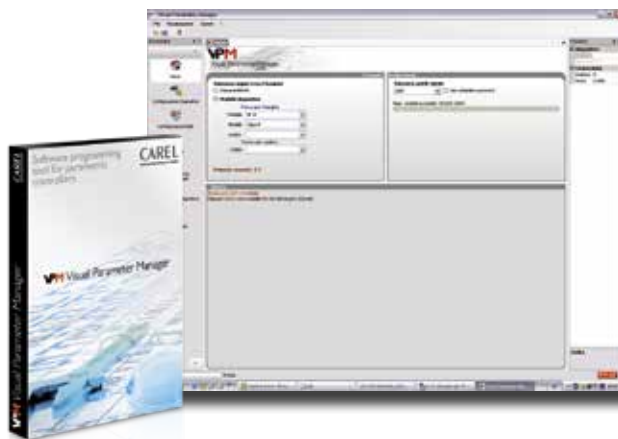
## Find your easy Dryer



### Temperature probes with NTC thermistor

The precision achieved due to the technical solutions adopted in the development of the sensor and the reliability resulting from the tests performed, make the CAREL NTC probes reliable and affordable transducers for measuring temperature.

Code	Description
NTC008HP00	Sensor NTC HP IP67 0,8M -50+105 ON AIR
NTC030WH01	Sensor NTC WH IP68 -50T105 cable 3m



### Visual Parameter Manager (VPM)

Program downloadable from <http://ksa.carel.com>. This tool can be used to set-up the controller from a computer, program the parameters and update the firmware.

Code	Power supply
<b>3 digital outputs</b>	
PJS8C0HW00	230 Vac +10 /-15% 50/60 Hz
PJS8C0HA00	115 Vac +10 /-15% 50/60 Hz
PJS8C0HC00	12 Vac +10/-15%, 50/60 Hz, 12 Vdc
<b>2 digital outputs</b>	
PJS8Y0HW00	230 Vac +10 /-15% 50/60 Hz
PJS8Y0HA00	115 Vac +10 /-15% 50/60 Hz
PJS8Y0HC00	12 Vac +10/-15%, 50/60 Hz, 12 Vdc

### Headquarters

CAREL INDUSTRIES HQs  
Via dell'Industria, 11  
35020 Brugine - Padova (Italy)  
[carel@carel.com](mailto:carel@carel.com)

### HygroMatik GmbH

Lise-Meitner-Str. 3  
24558 Henstedt-Ulzburg - Germany  
[hy@hygromatik.de](mailto:hy@hygromatik.de)

### RECUPERATOR

Via Valfurva 13  
20027 Rescaldina (MI), Italy  
[customer@recuperator.eu](mailto:customer@recuperator.eu)

### For more information

CAREL Asia - [www.carel.hk](http://www.carel.hk)  
CAREL Australia - [www.carel.com.au](http://www.carel.com.au)  
CAREL Central & Southern Europe - [www.carel.com](http://www.carel.com)  
CAREL Czech & Slovakia - [www.carel.cz](http://www.carel.cz)  
CAREL spol. s.r.o.  
CAREL Deutschland - [www.carel.de](http://www.carel.de)  
CAREL China - [www.carel-china.com](http://www.carel-china.com)  
CAREL France - [www.carelfrence.fr](http://www.carelfrence.fr)  
CAREL Korea - [www.carel.kr](http://www.carel.kr)  
CAREL Ibérica - [www.carel.es](http://www.carel.es)  
CAREL Ireland - [www.carel.ie](http://www.carel.ie)  
FarrahVale Controls & Electronics Ltd.  
CAREL Italy - [www.carel.it](http://www.carel.it)  
CAREL India - [www.carel.in](http://www.carel.in)

CAREL Japan - [www.carel-japan.com](http://www.carel-japan.com)  
CAREL Mexicana - [www.carel.mx](http://www.carel.mx)  
CAREL Middle East - [www.carel.ae](http://www.carel.ae)  
CAREL Nordic - [www.carelnordic.se](http://www.carelnordic.se)  
CAREL Poland - [www.carel.pl](http://www.carel.pl)  
ALFACO POLSKA  
CAREL Russia - [www.carelrussia.com](http://www.carelrussia.com)  
CAREL South Africa - [www.carelcontrols.co.za](http://www.carelcontrols.co.za)  
CAREL Sud America - [www.carel.com.br](http://www.carel.com.br)  
CAREL Thailand - [www.carel.co.th](http://www.carel.co.th)  
CAREL Turkey - [www.carel.com.tr](http://www.carel.com.tr)  
CFM Sogutma ve Otomasyon San. Tic. Ltd.  
CAREL U.K. - [www.careluk.com](http://www.careluk.com)  
CAREL U.S.A. - [www.carelnusa.com](http://www.carelnusa.com)



# CAREL

To the best of CAREL INDUSTRIES S.p.A. knowledge and belief, the information contained herein is accurate and reliable as of the date of publication. However, CAREL INDUSTRIES S.p.A. does not assume any liability whatsoever for the accuracy and completeness of the information presented without guarantee or responsibility of any kind and makes no representation or warranty, either expressed or implied. A number of factors may affect the performance of any products used in conjunction with user's materials all of which must be taken into account by the user in producing or using the products. The user should not assume that all necessary data for the proper evaluation of these products are contained herein and is responsible for the appropriate, safe and legal use, processing and handling of CAREL's products. The Information provided herein does not relieve the user from the responsibility of carrying out its own tests, and the user assumes all risks and liabilities related to the use of the products and/or information contained herein. © 2018 CAREL INDUSTRIES S.p.A. All rights reserved.